



# Transport Tanks

**No Rock and Roll transport tanks give you more options.**

Section	Contents	Page
2.1	Free-standing Liquid Transport Tanks	14
2.2	Modular Tank System	15
2.3	Dust Suppression & Water Delivery Units	16
2.4	Fire Fighting Units	17
2.5	Milk Transport Units	19
2.6	Ball Baffle System	20
2.7	Specifications	21

Ask for a  
**Promax** 

# Promax Transport Tanks

Get the poly tank advantage with the comprehensive range of Promax Transport Tanks. Regardless of wall thickness polyethylene tanks are still lightweight when compared to steel or fibreglass tanks; which means with a poly tank you can choose a larger tank without the weight penalty.

From the expandable modular tank system, through to the ball baffle system, dust suppression and water delivery units and even on-road fire-fighting and slip-on units and trailers, Promax's poly tanks deliver the benefits of larger tanks and are UV-stabilised to withstand the rigours of our climate.

## General Features

- UV-stabilized to withstand the elements for a long, trouble-free life
- One-piece polyethylene construction means significantly less weight compared with steel or fiber-glass tanks.
- Built-in baffles for stability during transport and braking
- Tanks are calibrated for easy measurement
- Vast range of sizes
- Available in a range of optional colours (NB – Optional colours incur a 5% surcharge)



All our Transport Tanks are manufactured from specially formulated polyethylene for transport applications and are food grade approved



## TESTIMONIAL

"I ended up buying a complete skid frame unit with pump and all. Promax put together a unit that just fitted the bill, actually better than I was thinking and it just works great. Promax arranged the whole deal with our local store, put it on my account and sent the tank to them freight-free. The store speaks very well of Promax and I personally have found out why."

2.1

# Free-standing Liquid Transport Tanks



The Promax range of Free-standing Liquid Transport Tanks delivers real strength through clever design.

These heavy duty tanks are constructed from hard-wearing polyethylene to be really tough, without the usual associated weight penalty of other types of tanks and have built-in baffles for improved stability. For heavier duty requirements, such as molasses, liquid fertiliser and other products with greater specific gravity than water, we manufacture a heavier walled tank for increased strength and durability for product up to 1.6 specific gravity.

- Exclusive, specially-formulated polyethylene
- Order with ball baffles to reduce surge and increase stability
- UV-stabilized to withstand the elements for a long, trouble-free life

- Mount directly to any flat surface with no frame needed for total versatility
- The thick walls are load-rated up to 1.3 specific gravity on all standard tanks for extra strength
- The large opening makes filling easy
- Clear calibration for accurate measurement of contents
- Larger tanks have a spill containment lip to reduce the risk of accidental spills
- Range of sizes from 20 to 13,000 litres
- Integrated tank securing kit available on all models



## QUICK FACT

**Promax Transport Tanks are used by councils, mining companies, forestry and water carriers across New Zealand to transport liquids safely.**

Get to grips with your tank with the detachable steel frame on pg 16

2.2

# Modular Tank System



Add extra income opportunities to your business with the Modular Tank System.

Delivering unmatched flexibility and economy for transporting liquids, the Modular Tank System fits any truck or trailer. Exclusive use of polyethylene eliminates rust problems and significantly reduces weight resulting in increased payload and durability.

- Tank sections can be drained individually allowing for cartage of different liquids, or linked to allow for equalized filling and draining.
- Increase or decrease tank size by adding or removing modules
- Fully baffled for extra stability and less wear and tear
- Fast flow of liquid between sections
- Reliable and secure pin mounting system
- Expandable to suit all trucks and trailers
- 455mm lid and breather in each tank section for straightforward access

**Built-in baffles reduce sideways and longitudinal movement for safer transport**

Create a new source of revenue with the Dust Suppression Unit on pg 16

## 2.3

# Dust Suppression and Water Delivery Units

Build a new income stream with the Promax Dust Suppression Spray System. Used on construction sites, road works, quarries and mining sites, this easy-to-setup unit attaches easily to all Promax Free-standing Liquid Transport Tanks to get you up and running quickly.

### Spray and Pump System

- Attach the tank directly to your chassis frame or use an optional slip-on steel frame
- Pumps come in either petrol or diesel 5.5hp.
- Fill your tank from overhead standpipes, mains hydrants or dams
- Big-bore, high-flow hose reel – optional
- Easy to operate, truck-mounted spray system
- All pipe-work is galvanized for durability
- Keep operations smooth with in-cab air controlled functions
- Portable in-cab control box for comfort and convenience
- Water level sight-glass for easy monitoring
- Pull-cord opening so you don't have to climb up to open the tank



### QUICK FACT

**In dry and windy conditions dust from gravel roads and construction sites can become a major nuisance. The quickest way to resolve this is with frequent water spraying.**

## Steel Frames for Free-standing Tanks

This easy to install steel frame ensures your tank can be mounted on any truck. The hot-dip galvanised frame has fork lift points for easy mounting and dismounting when the tank is empty. Comes with optional pump plate.



2.4

## Fire-fighting Units

UV-stabilised  
tank for a  
long and  
maintenance-  
free life

### Transport Trailer, Tank & Fire Kit



Enjoy the confidence of having an essential Promax Fire-fighting Unit. Purchase either the complete package comprising the tank, pump and hose ready-mounted on a road-safe trailer for fast response; or purchase the tank or trailer separately to fit with your existing equipment.

- Hot dip galvanised steel frame that won't rust
- Integrated Jockey wheel
- 50mm tow hitch to suit most tow bars
- Tail, brake, indicator and number plate lights to road code requirements
- 14" wheels with Ford hub pattern
- Long-lasting, all-terrain road tyres with mud-guards and flaps
- On-road trailers come with powerful hydraulic brakes
- Safety reflectors as standard on all models
- Compliance plates to get you up and running right away

This quality trailer is completely road-ready with tail-lights and indicators, number plate lights, mudguard and flaps, hydraulic brakes, reflectors, jockey wheel, tow hitch and 14" wheels. Choose from either on-road or off-road versions.

If you don't see exactly what you need, let us know. We can build out to your requirements, or simply source the trailer from us and DIY!

### TESTIMONIAL

**"Promax was very helpful, they were so knowledgeable and seemed to know our industry well. We purchased their Fire-fighting Trailer Unit and it remains on site available to any of our harvesting teams at quick notice. It travels well even across rough terrain."**

**GH, Gisborne**

2.4

## Fire Fighting Units Cont...

### Heavy Duty Slip-on Fire-fighting Units



Compact and convenient, this premium-quality fire-fighting unit is ready to slip onto a ute or truck for immediate action, when you need it most. Complete with pump, tank and hose the Heavy Duty Slip-on Fire-fighting Unit is also fitted with the Promax Ball Baffle System for added stability on the move.

- Pressure regulator fitted to pump for safer operation
- Rubber anti-vibration engine mounts reduces wear and tear
- Tough hot-dip galvanised steel frame with easy lifting and tie-down points means the unit is always ready for action
- Poly-hose reel complete with 36m of 19mm hose and adjustable fire-fighting nozzle
- 2" Aussie Fire Chief pump – Max flow: 490L/min  
Max pressure: 100psi
- Camlock fittings on the pump

### Silver Series Slip-on Fire-fighting Units

Excellent  
value for  
money!



Excellent value combined with uncompromising quality, these Silver Series Fire-fighting Units are similar to the other Promax Fire-fighting Units but at a more cost effective price range.

- Comes ready to slip onto a ute or truck
- Powerful 5.5HP GX160 Honda Motor
- 2" Aussie Fire Chief pump – Max flow: 490L/min  
Max pressure: 100psi
- UV-stabilised, impact resistant, rust proof poly tank for maintenance-free life
- Rust-proofed galvanised mounting plate attaches easily to tank
- Hose wrap facility prevents hose tangles
- Extra long 36m of 19mm hose
- Adjustable fire fighting nozzle

*NB: These units do not have the heavy duty skid frame.*

## 2.4

### Fire Fighting Units Cont...

Available  
with your  
choice of any  
Promax  
Tank!

#### Tank and Trailer Combo

For when you have the pump and just need the tank and trailer to transport water to where it's needed, Promax is proud to offer a Tank and Trailer Combo. Featuring our road-ready trailer combined with the tank of your choice, this kit is ideal for upgrading.

- Hot-dip galvanised steel frame that won't rust
- 50mm tow hitch to suit most tow bars
- Tail, brake, indicator and number plate lights to road code requirements
- Long-lasting, all-terrain road tyres with mud-guards and flaps
- On-road trailers come with powerful hydraulic brakes
- Safety reflectors as standard on all models
- Compliance plates to get you up and running right away
- UV-stabilised polyethylene tank for long life and durability

## 2.5

### Milk Transport Units

These compact and convenient Milk Transport Units are specially designed for the transportation of milk or colostrum around the farm, from the shed to the feeders or storage tanks making it easier, quicker and cleaner to do these jobs on the run!

The tanks are manufactured from specially formulated polyethylene for transport applications and are food grade approved.

New  
Product!

#### Milk Transport Slip-On Units



These sturdy polyethylene tanks are ready to slip on to your trailer, truck or ute to be transported to exactly where you need them. Comes with steel frame for easy loading and unloading.

- Ready to slide onto ute, truck or trailer for immediate action
- Fully galvanised frame won't rust or perish
- Calibrated for easy measurements of contents
- Large opening makes filling easy
- Spill containment lip surrounds lid on tanks
- 2.5hp motor powers 200L/min pump
- 15m of 25mm delivery hose with dispensing nozzle
- Return / agitator system for mixing contents

## 2.5

### Milk Transport Units Cont...

#### Milk Transport Trailer Units



All the benefits of the slip-on units but with the extra features delivered with the trailer:

- Strong hot-dip galvanised steel frame won't rust or perish
- 50mm tow hitch fits most tow bars
- Hinged drawbar allows flotation over uneven terrain
- Dual axles fitted with 22" high flotation all terrain tyres.
- Tough polyethylene tank
- Calibrated for easy measurements of contents
- Large opening makes filling easy
- Spill containment lip surrounds lid on tanks
- 2.5hp Motor powers 200L/min pump
- 10m of 25mm Delivery Hose with dispensing nozzle
- Return / Agitator System for mixing contents

## 2.6

### Ball Baffle System

For even greater stability when cornering and braking the Promax Ball Baffle system makes all the difference by preventing the surge wave. Manufactured in top-quality food-grade materials it can be used for any type of liquid (including potable water and diesel) to markedly improve load stability during transit. This improved stability can lead to significant savings in terms of mechanical wear and tear.

- Suitable for use with any tank type; polyethylene, steel, fibre-glass, aluminium etc
- Reduces wear and tear on the truck
- Lightweight, durable with no rust
- Simple to install; clip together and place in the tank
- Food grade quality material - suitable for potable water



#### Low liquid displacement:

Large ball displaces 428 ml and weighs only 386g  
Small ball displaces 150 ml and weighs only 120g

#### Recommend use quantity:

355mm is 1 ball baffle per 40L of tank capacity  
195mm is 1 ball baffle per 7L of tank capacity

For an independent report on the Ball Baffle System phone 0800 77 66 29

2.7

# Transport Tank Specifications

## Free-Standing Liquid Transport Tanks

Optional Colours



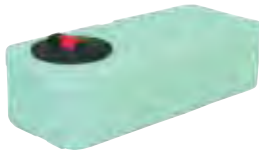
Optional colours incur a 5% surcharge

20L  
Free-standing  
Transport Tank



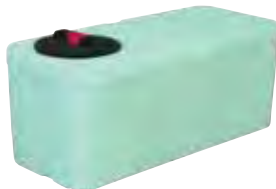
Code	Description	Dimensions
PS020FS	20 litre – Free-standing Transport Tank	590mm (L) 320mm (W) 280mm (H)

50L  
Free-standing  
Transport Tank



Code	Description	Dimensions
PS050FS	50 litre – Free-standing Transport Tank	920mm (L) 390mm (W) 305mm (H)

100L  
Free-standing  
Transport Tank



Code	Description	Dimensions
PS0100FS	100 litre – Free-standing Transport Tank	920mm (L) 390mm (W) 425mm (H)

200L  
Free-standing  
Transport Tank



Code	Description	Dimensions
PS0200FS	200 litre – Free-standing Transport Tank	925mm (L) 710mm (W) 510mm (H)

400L  
Free-standing  
Low-profile  
Transport Tank



Code	Description	Dimensions
PS0400FS	400 litre – Free-standing, Low-profile Transport Tank	1620mm (L) 710mm (W) 510mm (H)

2.7

**Transport Tank Specifications Cont...**

200L  
Free-standing  
Transport Tank



Code	Description	Dimensions
AG200	200 litre – Free-standing Transport Tank	800mm (L) 550mm (W) 600mm (H)

550L  
Free-standing  
Transport Tank



Code	Description	Dimensions
AG550	550 litre – Free-standing Transport Tank	1250mm (L) 830mm (W) 870mm (H)

900L  
Free-standing  
Transport Tank



Code	Description	Dimensions
AG900	900 litre – Free-standing Transport Tank	1880mm (L) 830mm (W) 870mm (H)

800L  
Free-standing  
Transport Tank



Code	Description	Dimensions
ST0800FS	800 litre – Free-standing Transport Tank	1350mm (L) 1200mm (W) 690mm (H)

1100L  
Free-standing  
Transport Tank



Code	Description	Dimensions
ST1100FS	1100 litre – Free-standing Transport Tank	1350mm (L) 1200mm (W) 900mm (H)

1200L  
Free-standing  
Transport Tank

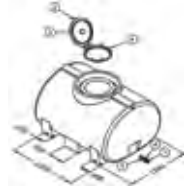


Code	Description	Dimensions
ST1200FS	1200 litre – Free-standing Transport Tank	1700mm (L) 1320mm (W) 860mm (H)

## 2.7

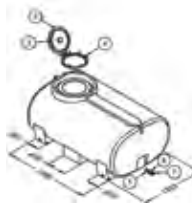
### Transport Tank Specifications Cont...

1500L  
Free-standing  
Transport Tank



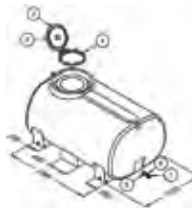
Code	Description	Dimensions
ST1500FS	1500 litre – Free-standing Transport Tank	1700mm (L) 1320mm (W) 1050mm (H)

2000L  
Free-standing  
Transport Tank



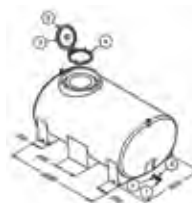
Code	Description	Dimensions
ST2000FS	2000 litre – Free-standing Transport Tank	2000mm (L) 1420mm (W) 1070mm (H)

2500L  
Free-standing  
Transport Tank



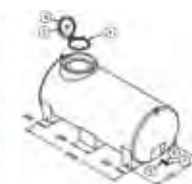
Code	Description	Dimensions
ST2500FS	2500 litre – Free-standing Transport Tank	2000mm (L) 1420mm (W) 1265mm (H)

3000L  
Free-standing  
Transport Tank



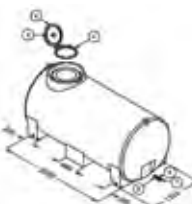
Code	Description	Dimensions
ST3000FS	3000 litre – Free-standing Transport Tank	2340mm (L) 1520mm (W) 1200mm (H)

3400L  
Free-standing  
Transport Tank



Code	Description	Dimensions
ST3400FS	3400 litre – Free-standing Transport Tank	2960mm (L) 1450mm (W) 1230mm (H)

4400L  
Free-standing  
Transport Tank



Code	Description	Dimensions
ST4400FS	4400 litre – Free-standing Transport Tank	2960mm (L) 1450mm (W) 1470mm (H)

2.8

**Transport Tank Specifications Cont...**

4800L  
Free-standing  
Transport Tank



Code	Description	Dimensions
ST4800FS	4800 litre – Free-standing Transport Tank	2340mm (L) 1550mm (W) 1880mm (H)

7000L  
Free-standing  
Transport Tank



Code	Description	Dimensions
ST7000FS	7000 litre – Free-standing Transport Tank	3250mm (L) 1920mm (W) 1640mm (H)

8000L  
Free-standing  
Transport Tank



Code	Description	Dimensions
ST8000FS	8000 litre – Free-standing Transport Tank	3250mm (L) 1900mm (W) 1850mm (H)

10000L  
Free-standing  
Transport Tank



Code	Description	Dimensions
ST10000FS	10000 litre – Free-standing Transport Tank	3600mm (L) 2250mm (W) 1850mm (H)

13000L  
Free-standing  
Transport Tank



Code	Description	Dimensions
ST13000FS	13000 litre – Free-standing Transport Tank	3600mm (L) 2250mm (W) 2280mm (H)

## 2.8

### Transport Tank Specifications Cont...

#### Modular Tank System



Code	Description	L (mm)	W (mm)	H (mm)
SMC04000	4200 litre – Fully Baffled Transport Tank	1825	2160	1680
SMC06000	6200 litre – Fully Baffled Transport Tank	2665	2160	1680
SMC08000	8200 litre – Fully Baffled Transport Tank	3505	2160	1680
SMC10000	10200 litre – Fully Baffled Transport Tank	4345	2160	1680
SMC12000	12200 litre – Fully Baffled Transport Tank	5185	2160	1680
SMC14000	14200 litre – Fully Baffled Transport Tank	6025	2160	1680
SMC16000	16200 litre – Fully Baffled Transport Tank	6865	2160	1680
SMC18000	18200 litre – Fully Baffled Transport Tank	7705	2160	1680
SMC20000	20200 litre – Fully Baffled Transport Tank	8545	2160	1680
SMC22000	22200 litre – Fully Baffled Transport Tank	9385	2160	1680
SMC24000	24200 litre – Fully Baffled Transport Tank	10225	2160	1680
SMC26000	26200 litre – Fully Baffled Transport Tank	11065	2160	1680
SMC28000	28200 litre – Fully Baffled Transport Tank	11910	2160	1680
SMC30000	30200 litre – Fully Baffled Transport Tank	12750	2160	1680

#### Dust Suppression and Water Delivery System



Promax Dust Suppression and Water Delivery Systems are built to order. Please contact us to discuss your requirements.

#### Steel Frames for Free-standing Tanks



Code	Description
STSK06FS	Steel Frame for ST0400FS & ST0600FS
STSK11FS	Steel Frame for ST0800FS & ST1100FS
STSK15FS	Steel Frame for ST1200FS & ST1500FS
STSK20FS	Steel Frame for ST2000FS & ST2500FS
STSK30FS	Steel Frame for ST3000FS & ST4800FS
STSK44FS	Steel Frame for ST3400FS & ST4400FS
STSK70FS	Steel Frame for ST7000FS & ST8000FS
STSK10FS	Steel Frame for ST10000FS & ST13000FS
STPP10	Optional pump plate for Free-standing Frames

2.8

**Transport Tank Specifications Cont...**

**Transport Trailer,  
Tank & Fire Kit**



Code	Description	L (mm)	W (mm)
SST10FF	1000 litre – On-farm Fire-fighting Trailer Unit	3480	1770
SST10RFF	1000 litre – On-road Fire-fighting Trailer Unit	3480	1770

**Slip-on  
Fire-fighting  
Units**



Code	Description	L (mm)	W (mm)	H (mm)
STF0400C	400 litre – ST Fire-fighter Unit complete	1850	1200	650
STF0600C	600 litre – ST Fire-fighter Unit complete	1850	1200	650
STF0800C	800 litre – ST Fire-fighter Unit complete	2000	1400	750
STF1000C	1000 litre – ST Fire-fighter Unit complete	2000	1400	950
STF1200FC	1200 litre – ST Fire-fighter Unit complete	2150	1700	850
STF1500FC	1500 litre – ST Fire-fighter Unit complete	2150	1700	1100
STF2000FC	2000 litre – ST Fire-fighter Unit complete	2800	2000	1050
STF2500FC	2500 litre – ST Fire-fighter Unit complete	2800	2000	1250

**Silver Series Slip-on  
Fire-fighting Units**



Code	Description	L (mm)	W (mm)	H (mm)	Weight (kg)
TMSFF06H	600 litre – Fire-fighter Unit complete	1190	1050	1050	57
TMSFF10H	1000 litre – Fire-fighter Unit complete	1400	1200	1225	90

**Tank & Trailer  
Combo**

Code	Capacity (litres)	Description	L (mm)	W (mm)
SSTT10	1000	On-farm Tank and Trailer only – no fire kit	3480	1770
SSTT10R	1000	On-road Tank and Trailer only – no fire kit	3480	1770

## 2.8

### Transport Tank Specifications Cont...

#### Milk Transport Units



Code	Description	L (mm)	W (mm)	H (mm)
MTU0600C ST	600 litre – Milk Transport Unit complete	1850	1200	770
MTU0800C ST	800 litre – Milk Transport Unit complete	2000	1400	750
MTU1000C ST	1000 litre – Milk Transport Unit complete	2000	1400	950
MTU1200C ST	1200 litre – Milk Transport Unit complete	2150	1700	850
MTU1500C ST	1500 litre – Milk Transport Unit complete	2150	1700	1100
MTU2000C ST	2000 litre – Milk Transport Unit complete	2800	2000	1050
MTU2500C ST	2500 litre – Milk Transport Unit complete	2800	2000	1250

#### Milk Trailer Units



Code	Description	L (mm)	W (mm)	H (mm)
MTU800OFF	800 litre – Milk Transport Trailer	3200	1650	1040
MTU1000OFF	1000 litre – Milk Transport Trailer	3200	1650	1250
MTU1200OFF	1200 litre – Milk Transport Trailer	3200	1650	1210

#### Ball Baffle System



Available in 2 sizes  
 Small Baffle Ball 195mm  
 Large Baffle Ball 355mm

Code	Description	Diameter (mm)	Weight (gm)	Displacement (ml)
BBAFF195	Small Baffle Ball	195 mm	120	150
BBAFF335	Large Baffle Ball	355 mm	386	428

**Order  
Now!**

**For your nearest  
Promax dealer**

**FREephone 0800 77 66 29**

**FAX 09 407 3578**

**EMAIL [sales@promaxplastics.co.nz](mailto:sales@promaxplastics.co.nz)**

**[www.promaxplastics.co.nz](http://www.promaxplastics.co.nz)**

**Ask for a  
Promax**

